

**Global engineering -  
Trusted solutions**



# **OWNER'S MANUAL**

## **PT - VALVE**

**Clemco**  
International GmbH

Carl-Zeiss-Straße 21  
83052 Bruckmühl  
Germany

Tel.: +49 (0) 8062 – 90080  
Mail: [info@clemco.de](mailto:info@clemco.de)  
Web: [www.clemco-international.com](http://www.clemco-international.com)

## 1 Range of validity

This owner's manual is valid for the working and maintenance of the PT valve. It is working from a minimum working pressure of 2,5bar on, opens completely at 5,5bar and is approved for a maximum pressure of 12bar.

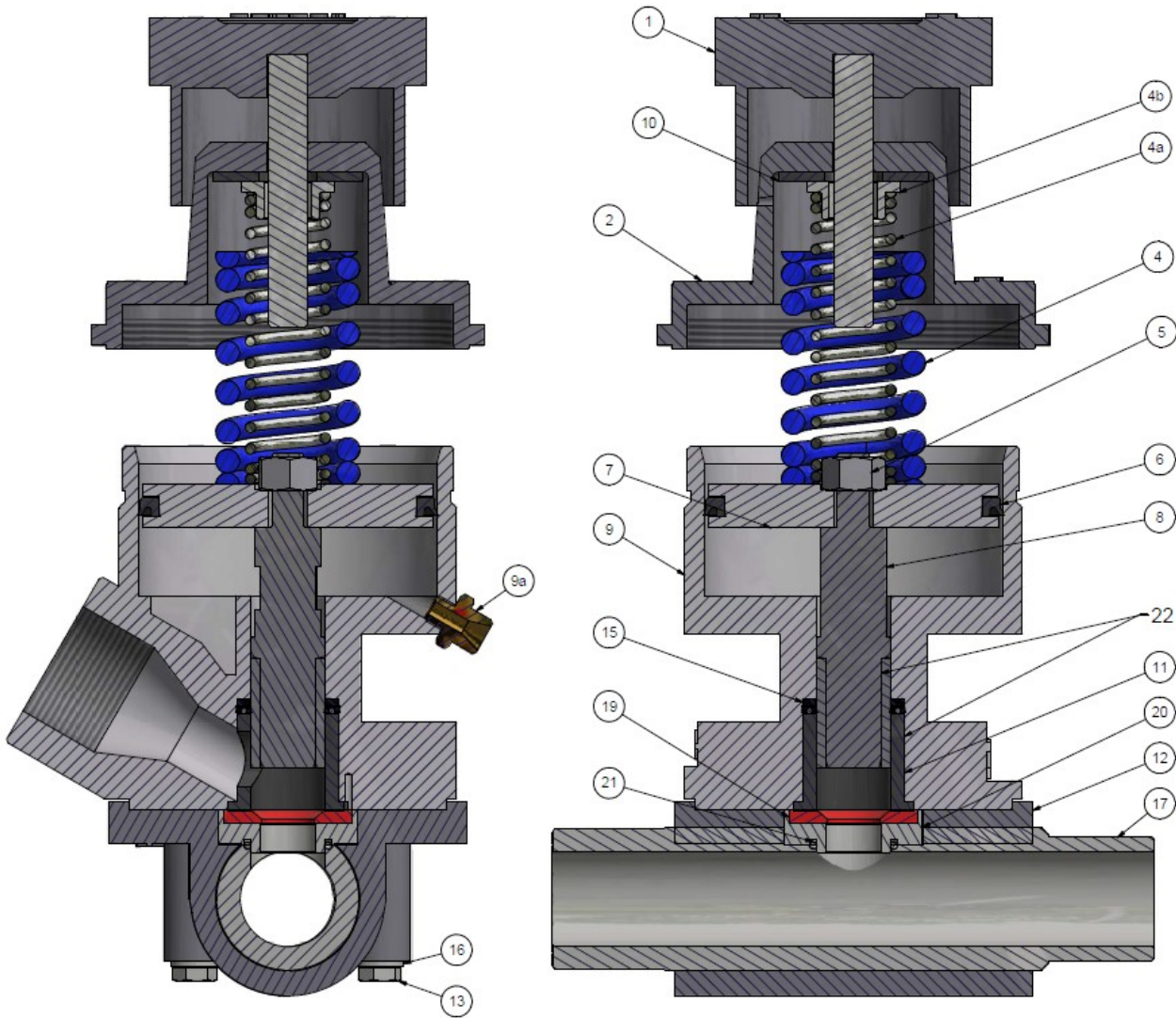
## 2 Range of application and restriction

This valve is designed for abrasive dosage. It is usable for several common kinds of abrasives, i.e. steel grit, corundum, slag, glass.

## 3 Description of equipment and spare parts list

Picture 2 shows list of components of PT.

Pos. No.	Description	Ref.:
0	PT valve cpl.	90378 D
1	PT - radial handle	100460
2	PT - cylinder cover	100461
4	PT - spring	100463
5	PT - nut 1/2"	03511I
6	PT - gasket 06	90392D
7	PT - piston	100465
8	PT - TC plunger 7	90314D
9	PT - body	100466
9a	Red. nipple 1/4"-1/8"	01962D
10	PT - seat 10	90393D
11	PT - metering sleeve cpl.	100467
11-1	PT - TC sleeve 13	90316D
11-2	PT - sleeve gasket	100468
11-3	PT - sleeve insert	100469
11-4	PT - o-ring	100513
12	PT - pipe support	100470
13	PT - screws	100471
14	Not reserved	
15	PT - o-ring 18	90408D
16	Washer 5/16 for pos.13	03216I
17	PT - pipe 1 1/2" - 1 1/4"	24231D
18	CFT-1 1/2"	24232D



Picture 1

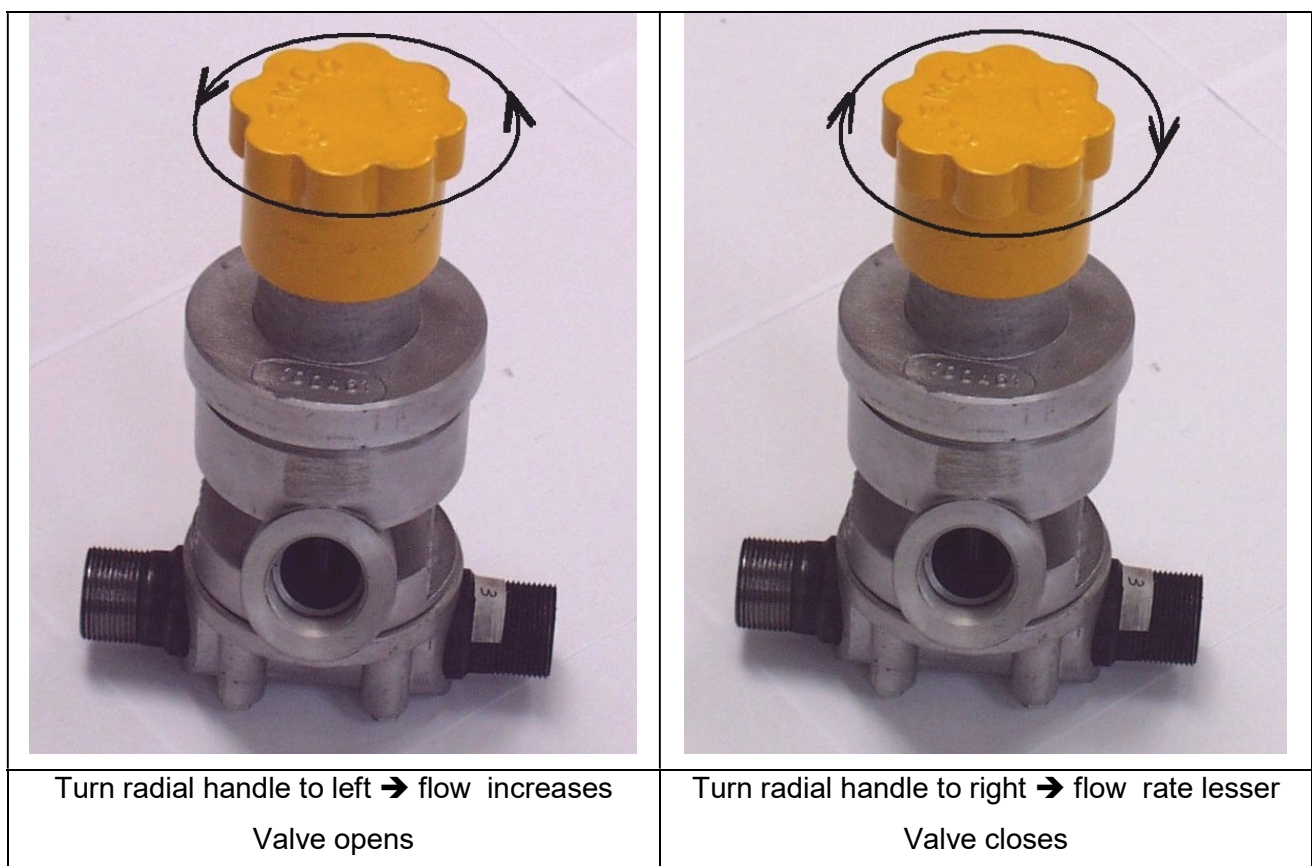
## 4 Operation

The PT valve will be delivered in a fully operational condition.

It is only usable with a complete unit. For installation and operation of the valve follow the instructions of the corresponding sandblasting machine.

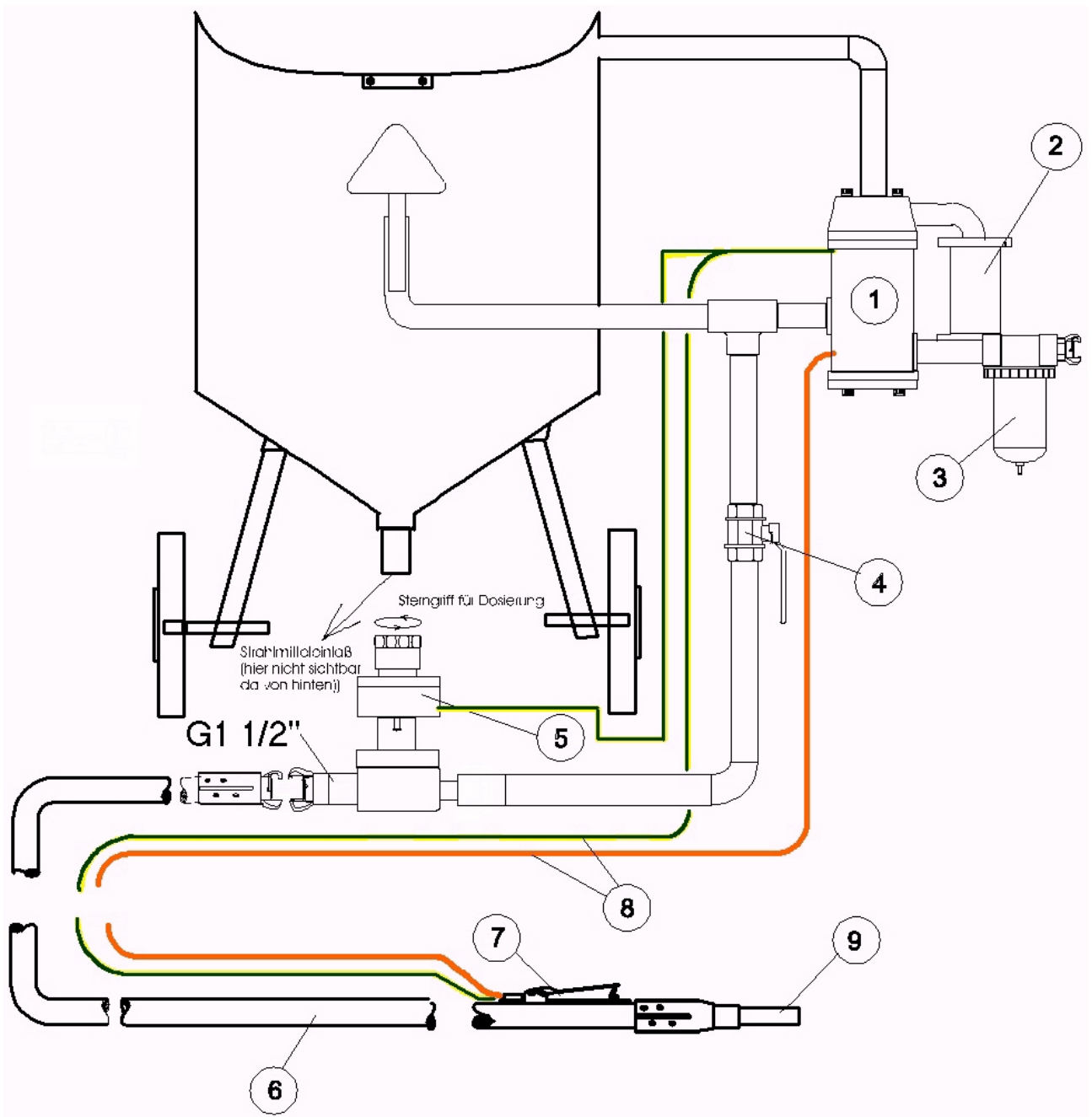
Please note following steps to operate it:

- the blast process will be turned on
- by turning the radial handle (pos.1) a slow opening or closing of the abrasive flow will be allowed until an optimal air-abrasive-stream is achieved at the nozzle. (see picture 2)



Picture 2

**Note!** It has to be taken care of the correct connecting of the control hoses (see below). The valve opens under pressure and closes on release.



Picture 3

## 5 Maintenance

The whole blast equipment is subject to wear during operation. Security and high efficiency are only granted when the unit is regularly maintained. The wear and tear is depending of many facts, i.e. abrasive, working pressure etc.

The valve should be daily checked for density and visible damages as well as for the right dosage.

## **6 Exchange of the wearing parts**

For dismantling and re-assembly of the PT valve for repairing purposes below steps are absolutely to follow:

**A** The body (9) get unscrewed from the cylinder cover (2) by the included spanner. Spring (4) must be loose! It is fitted only through the pressing of the body (9) to the cylinder cover (2).

**B** The assembled unit consisting of PT piston (7) with mounted gasket and PT plunger (8), will be pulled out with assistance of the PT nut (5). The nut (5) will be unscrewed and so the PT sleeve can be exchanged.

**C** Afterwards the 4 screws (13) will be loosed with a spanner SW13, thereby the PT pipe (14) and the PT metering sleeve cpl. (11) get free. The PT sleeve gasket (11-2) and the PT o-ring (11-4) are just pulled onto the PT sleeve insert (11-3). The PT sleeve o-ring (15) is then ready to get moved from the body (9).

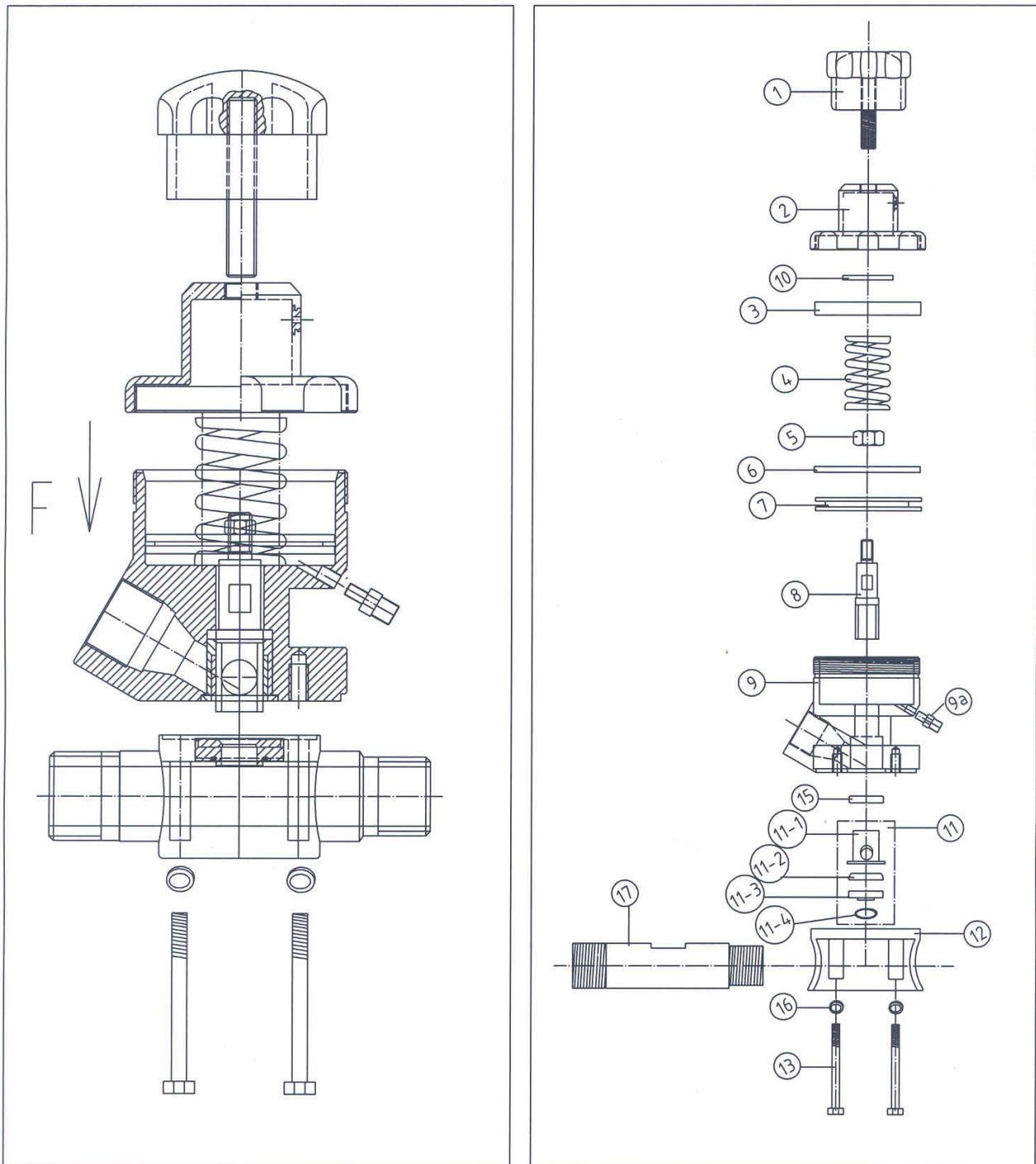
**D** The re-assembly of the valve follows in reverse order.

### **NOTICE**

If necessary, the valve can be dismantled at the place of action (i.e. screwed on, in mounted condition on the pot) by following the same steps as well as for the exchange, see cap.6.

## 7 Pneumatic connection of the PT valve

The pneumatic connection of the PT-valve (pos.5 - pict. 4) and the RMS valve (Pos. 1- pict.2), is made by a double nipple 1/8" to 1/4" part. No.: 01962D, witch is fixed in the PT-body part. no. 100466.



Picture 4